

# Heathrow: Made in the UK



**Heathrow: Made in the UK champions the brilliant businesses in Heathrow's supply chain, as well as businesses from up and down the country that use Heathrow's unparalleled international connectivity to export, trade and to facilitate inward investment.**

**Supply chain partners**

Our supply chain partners play a vital role keeping the airport running, ensuring we can serve over 83 million passengers a year. They support Heathrow achieving our vision of being an extraordinary airport, fit for the future.

In 2024, Heathrow invested £1.1bn with 1,100 business in our direct supply chain, supporting over 16,400 jobs across the country. 60% of Heathrow's supply chain are SMEs, representing the very best of UK innovation and enterprise.

We have highlighted a selection of our supply chain partners in Heathrow: Made in the UK who are based across every nation and region of the UK, spanning critical sectors from cybersecurity to advanced manufacturing.

The businesses profiled range from our neighbours in West London, ChargeBox, who manufacture bespoke mobile phone charging solutions - to KFT Fire Trainers based in Barlborough in the East Midlands who are constructing a life size model of an A380 for Heathrow's fire firefighters to simulate an aircraft fire – to Camlin Rail, from Lisburn in Northern Ireland, who provide innovative monitoring solutions for the Heathrow Express.

**UK businesses exporting through Heathrow**

Heathrow connects businesses across the nations and regions to more than 230 destinations in over 85 nations and regions. 92% of the global economy is accessible with a direct flight from Heathrow.

Over £200bn worth of goods are processed through Heathrow every year, largely in the belly hold of passenger planes, making Heathrow the largest port by value in the UK. From advanced manufacturing in the North East, to Cornish tea, to Welsh preserves, Heathrow's connectivity enables exporters to sell their products globally.

Only air freight can facilitate the speed, security and specialised handling requirements that sectors such as perishable food items or advanced manufacturing require.

**Expanding Heathrow would deliver opportunities for businesses and exporters in every nation and region of the UK as 60% of the economic benefit of expanding Heathrow will be felt by communities outside London and the South East.**

Heathrow is the UK's only hub airport and is critical to nation's ability to trade and compete globally. However, Heathrow is operating at full capacity and while other international hub airports have room to grow, Heathrow has run out of space for passengers, aircraft and runway slots.

Expanding Heathrow would mean opportunities to connect to new destinations and strengthen existing services, bringing more of the global economy within the reach of UK businesses to trade, export and invest with.

Subject to the greenlight from Government on expansion, billions of pounds of investment will flow into the UK economy as new contracts are awarded for design, planning and other works.

Not only would an expanded Heathrow deliver increased choice, competition and connectivity for passengers, airlines and business, it would open up even more opportunities for UK businesses small and large to become part of our supply chain.

An expanded Heathrow means more supply chain opportunities, strengthening domestic connectivity, increased inward investment and more opportunities for UK businesses to export their goods and expertise to the world.



# Supporting business across the UK East of England

Heathrow

As the UK's only hub airport, Heathrow plays a crucial role in supporting businesses across the East of England, by unlocking connectivity, trade, and investment.

Heathrow connects businesses across the East of England to more than 230 destinations in 85 countries. Regions and nations across the UK can access 92% of the global economy within a direct flight from Heathrow.

## Case Study

### Britannia Fire

Britannia Fire is an independent fire-extinguisher manufacturing company founded in Ashwellthorpe, Norfolk in the 1970s. Founder and Managing Director Roger Carr is proud of the company's East of England heritage. The company continues to produce its extinguishers on the outskirts of Norwich, and to export its innovative British technology through Heathrow to some of the world's fastest growing international markets.

“ Heathrow's success is important to us because it gives us the opportunity to get our products worldwide. We sell in places like India, Malaysia; it all goes through Heathrow. Culturally, The Hub is important to our business.”

Roger Carr, Founder and Managing Director



## HEATHROW AND THE EAST OF ENGLAND (2024)

**82**  
Supply chain partners

**£102.3m+**  
Supply chain spend in the East of England

**80.5%**  
of supply chain are SMEs



## World of Opportunity 2024

### Happy Paul

In 2024, Heathrow re-launched the World of Opportunity grant programme designed to support the UK's MSEs to boost their export potential through trade missions, research and training opportunities.

Based in the East of England, Happy Paul was born from the understanding that wellness shouldn't be a luxury afforded to the few but should be accessible to the many. As a result, they developed a mood-lifting fragrance blend to encourage simple, joyful acts of self-care. Happy Paul won one of twelve available grants on offer from Heathrow to support their export potential. They're already reaching customers in the UK, Sweden, Norway, and Denmark, and they aspire to spread more smiles further across the globe, making happiness and simple self-care universally accessible.



### Chisholm & Winch

Chisholm & Winch, based in Romford, have been one of Heathrow's longest-standing suppliers, working across all terminals for over 32 years. Their largest project to date is installing passive fire protection in the half-mile cargo tunnel between Terminals 3 and 4, set for completion in December 2025. The work, done overnight by a 70-strong team, involves fitting more than 11,000 boards. Over 60% of their team comes from nearby boroughs, with four members each having worked at Heathrow for more than 25 years – and still going strong.



Romford  
East of England

HEATHROW'S  
IMPORTANCE  
TO THE UK



**60%**  
of our supply chain are SMEs



**83m+**  
passengers in 2024



**72%**  
of all UK air cargo by value comes via Heathrow\*

June 2025

Heathrow

MAKES  
The Manufacturers' Organisation

\* source: HMRC UK Trade Info – 2024 full year data

As the UK's only hub airport, Heathrow plays a crucial role in supporting businesses across the East Midlands, by unlocking connectivity, trade, and investment.

Heathrow connects businesses across the East Midlands to more than 230 destinations in 85 countries. Regions and nations across the UK can access 92% of the global economy within a direct flight from Heathrow.

HEATHROW AND THE EAST MIDLANDS (2024)

**35**  
Supply chain partners

**£14.4 m+**  
Supply chain spend in the East Midlands

**74%**  
of supply chain are SMEs



World of Opportunity 2024

**Diamond Hard Surfaces Ltd**

In 2024, Heathrow re-launched the World of Opportunity grant programme designed to support the UK's SMEs to boost their export potential through trade missions, research and training opportunities.

Based in Northamptonshire, Diamond Hard Surfaces is one of 12 winners from around the UK. They specialise in advanced materials technology, providing innovative solutions for high-endurance applications using their unique, patented amorphous diamond material, Adm™. Their coatings extend the lifespan of components operating in extreme environments, offering durability, abrasion resistance, and low friction. They continue to grow their customer base and currently export to over 22 locations with export sales representing more than 65% of their business.

Case Study

**Micro Mesh Engineering**

Micro-Mesh Engineering is one the UK's largest producers of air-filtration solutions. In 2020 the company founded its online division, FilterFinder. FilterFinder takes its products to global businesses, such as Rolls Royce, Boeing, Ryanair and other household names. FilterFinder has a global footprint, and now exports to over 60 countries. Heathrow is at the heart of this international logistics operation. It serves as a critical hub, and ensures that FilterFinder products are delivered promptly and efficiently. Heathrow helps to maintain the integrity of customer supply chains and the company's reputation for reliability.

“ For us Heathrow is a key part in maintaining our global presence. It's our bridge to the rest of the world and our customers overseas, not just in transporting our cargo but our people too. Heathrow has been instrumental in helping grow our business globally.

Elliot Underwood, Head of Online Sales



**KFT Fire Trainer**

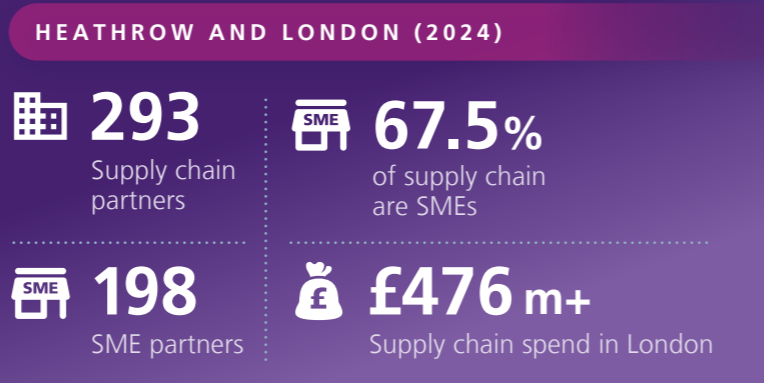
Heathrow must train rigorously for the rare scenario of an aircraft fire, but safe testing options are limited. Derbyshire-based KFT Fire Trainers are global experts in live fire training, with controlled environments that realistically replicate the heat, fire, and smoke of a real aircraft inferno. KFT are building a bespoke rig for Heathrow, simulating a full CAT 10 aircraft and simulated ground fuel spill scenario. Currently under construction at KFT's partner facility, the rig will be delivered in large modules to Heathrow's fire training ground in September 2025 for use by the Airport Fire Team and local partners.



\* source: HMRC UK Trade Info – 2024 full year data

As the UK's only hub airport, Heathrow plays a crucial role in supporting businesses across London, by unlocking connectivity, trade, and investment.

Heathrow connects businesses across London to more than 230 destinations in 85 countries. Regions and nations across the UK can access 92% of the global economy within a direct flight from Heathrow.



**Case Study**

**Russell Finex**

Founded over 85 years ago, and employing over 250 people in Feltham, Russell Finex is a global leader in fine-mesh technology. Using Heathrow's extensive cargo connections, Russell Finex exports its custom-made British technology to over 140 countries worldwide. The business relies on its nearness to Heathrow to gain competitive access to major international markets. These connections have spurred investment in its factory, which continues to boost the local economy and bring highly skilled talent to the area.

“ Being close to Heathrow, we can move our products quickly and efficiently, once they're made, to the airport and then to any part of the world.”

Ray Singh, FChairman



**World of Opportunity 2024**

**Heart Relocation**

In 2024, Heathrow re-launched the World of Opportunity grant programme designed to support the UK's SMEs to boost their export potential through trade missions, research and training opportunities.

Based in Hillingdon, Heart Relocation is one of 12 winners from around the UK. They are committed to delivering exceptional customer service and their personalised approach and extensive global network ensure seamless corporate relocations. With over 500 trusted partners and more than 3,000 consultants in 100+ countries, they provide unparalleled support worldwide.



**ChargeBox**

Based in Chiswick, fast charge technology innovator ChargeBox Ltd was selected for a trial period in late 2024 for its bespoke passenger mobile device charging stations. The trial was such a success that Heathrow expanded the rollout across all terminals within four months, thanks to the impact it had on Heathrow's service levels. Manufactured and assembled in the UK, the final production is carried out at its Chiswick site before being exported worldwide.



\* source: HMRC UK Trade Info - 2024 full year data

As the UK's only hub airport, Heathrow plays a crucial role in supporting businesses across the North East, by unlocking connectivity, trade, and investment.

Heathrow connects businesses across the North East to more than 230 destinations in 85 countries. Regions and nations across the UK can access 92% of the global economy within a direct flight from Heathrow.

HEATHROW AND THE NORTH EAST (2024)

**10**  
Supply chain partners

**£1.7m+**  
Supply chain spend in the North East

**70%**  
of supply chain are SMEs

**497,000**  
Passengers travelled to and from the North East of England

**70**  
Average number of weekly flights



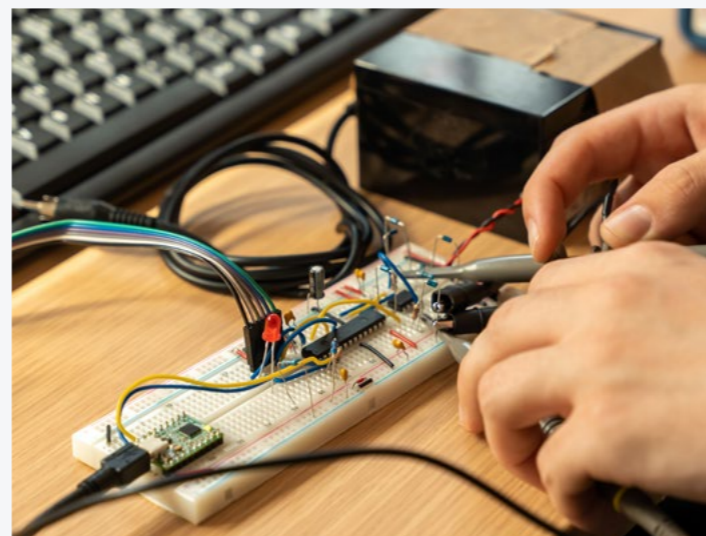
Case Study **Coltraco Ultrasonics**

Coltraco Ultrasonics makes advanced technology systems, and relies on Heathrow to rapidly transport its bespoke British technology to customers in over 120 countries.



“ We export 90% of our manufactured output to 120 countries, covering continents including Asia, Europe and the Middle East. We have exported through Heathrow for 30 years as the single most powerful logistic multiplier to our exporting success. Heathrow also played a vital role in Coltraco winning our second Queen’s Award for Enterprise in International Trade.”

Professor Carl Stephen Patrick Hunter OBE, Chairman



**Hart Door Systems**

There is more than one type of door - something Hart Door Systems from Newcastle know very well. Heathrow has been working with them ever since 1984, and one of the largest projects recently was in Terminal 5. There are now over 300 doors installed across the entire airport, varying from pedestrian to specialist fire and safety doors, in areas from check-in desks to the London Underground links. Hart Door Systems have been suppliers for over 40 years now, and are a critical partner in Heathrow's supply chain.



# Supporting business across the UK Northern Ireland

Heathrow

Heathrow: Made in the UK 12-13

As the UK's only hub airport, Heathrow plays a crucial role in supporting businesses across Northern Ireland, by unlocking connectivity, trade, and investment.

Heathrow connects businesses across Northern Ireland to more than 230 destinations in 85 countries. Regions and nations across the UK can access 92% of the global economy within a direct flight from Heathrow.

## HEATHROW AND NORTHERN IRELAND (2024)

**100%**  
of supply chain partners are SMEs

**£300,177**  
Supply chain spend in Northern Ireland

**118**  
Average number of weekly flights

**660,700**  
Passengers travelled to and from Northern Ireland



## Case Study

### Premier Packaging Solutions

Premier Packaging Solutions specialises in quality bespoke, plain and printed packaging for various sectors, including the hospitality, patisserie, gift and wholesale industries. For this Newtownards company, the region's frequent and reliable links to Heathrow have been crucial for success. Using those links, the company has grown its international exports with the potential for expansion into Australasian and African markets.



“ We currently use Heathrow as a hub to the rest of the planet. We export to around 40 countries; Heathrow enables us to quote those jobs with confidence, knowing they're going to get to their destination safely and on time.”

Mark McMahon, Founder and Director

### Camlin Rail

Camlin, based in Lisburn, Northern Ireland, provides technology to enhance performance across the energy and rail sectors in over 20 countries. At Heathrow, its PanVue system monitors around 500 trains daily on the airport's sole rail line. Heathrow was Camlin's first UK customer, helping drive wider adoption of PanVue both nationally and internationally. Camlin Rail has since secured further contracts with national rail providers thanks to Heathrow's confidence and support.



HEATHROW'S IMPORTANCE TO THE UK

**60%**  
of our supply chain are SMEs

**83m+**  
passengers in 2024

**72%**  
of all UK air cargo by value comes via Heathrow\*

June 2025

Heathrow

MAKES UK  
The Manufacturers' Organisation

\* source: HMRC UK Trade Info - 2024 full year data

As the UK's only hub airport, Heathrow plays a crucial role in supporting businesses across the North West, by unlocking connectivity, trade, and investment.

Heathrow connects businesses across the North West to more than 230 destinations in 85 countries. Regions and nations across the UK can access 92% of the global economy within a direct flight from Heathrow.

HEATHROW AND THE NORTH WEST (2024)

**45** Supply chain partners

**629,000** Passengers travelled to and from the North West

**75%** of supply chain are SMEs

**£22.9m+** Supply chain spend in the North West

**95** Average number of weekly flights



World of Opportunity 2024

### Crowberry Consulting Ltd

Crowberry Consulting® is a certified female-owned business established in 2006 by Becky Toal in Chorley, Lancashire to provide specialist support to business in the field of sustainability and environmental management. Crowberry expanded to an office in Dublin, Ireland with the Guinness Enterprise Centre in February 2023, this enabled them to expand their reach and provide auditing, training and consultancy services to customers in the EU.



Case Study **Stratton Tea**

Stratton Tea buys, blends and repackages tea for export and domestic trading. Established in 2022, Stratton Tea draws upon a family legacy spanning over 75 years in the tea industry, bringing with them experience of the tea trade in India. Stratton Tea export blended tea products to wholesalers in Europe, Africa, China and the Middle East.

“ Access to the global markets is vital for the growth of our business, Heathrow is a vital partner to us, to reach new markets across the world enabling us to share and distribute our tea to new people.”

Razi Khan, Director, Stratton Tea



### ATG Airports

Based in Cheshire, ATG Airports is a leading specialist in airfield ground lighting (AGL) systems, proudly supporting airports across the UK and worldwide. With over 80 skilled team members and a partnership with Heathrow spanning more than 25 years, ATG recently played a vital role in the airport's major runway refurbishment. Delivered by a dedicated project team working to precise overnight timelines, the work was completed without any disruption to flight operations. Heathrow also continues to rely on ATG's UK-manufactured AGL products, as well as its airfield lighting control and monitoring systems - all backed by responsive 24/7 technical support.



\* source: HMRC UK Trade Info - 2024 full year data

As the UK's only hub airport, Heathrow plays a crucial role in supporting businesses across Scotland, by unlocking connectivity, trade, and investment.

Heathrow connects businesses across Scotland to 230 destinations in 85 countries. Regions and nations across the UK can access 92% of the global economy within a direct flight from Heathrow. Heathrow's extensive domestic connectivity and hub access to international markets facilitates over 575,000 business passengers to Scotland via Heathrow each year supporting Scotland's economy and helping Scottish businesses compete in the global marketplace.

HEATHROW AND SCOTLAND (2024)

**23**  
Supply chain partners

**£5.6 m+**  
Supply chain spend in Scotland

**83%**  
of supply chain are SMEs

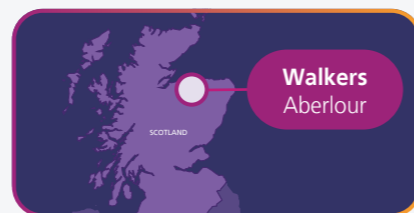
**2.9m**  
Passengers travelled to and from Scotland

**422**  
Average number of weekly flights (arrival and departures)



Case Study **Walkers**

Founded 125 years ago, Walker's now employs well over a thousand people at its bakery in Aberlour, north of the Cairngorms. Overseas sales account for almost half of Walker's business. The company, which exports to more than 100 countries, depends on Heathrow's global connections to reach its international customers. And it's also delighted to have its products on sale within Heathrow's terminals.



“ Heathrow is the best connection for us. We're based in the north of Scotland. We need a central Hub to go anywhere in the world.”

Nicky Walker, Managing Director

Merson Group

From East Kilbride, Scotland, Merson Group design, manufacture and install signage that ensures all of Heathrow's passengers are kept on the right path and in the right direction. Heathrow has worked with Merson Group on numerous projects for over 20 years, including wayfinding signage across all terminals and most recently digital wayfinding signage.



\* source: HMRC UK Trade Info - 2024 full year data

# Supporting business across the UK South East of England

Heathrow

Heathrow: Made in the UK 18-19

As the UK's only hub airport, Heathrow plays a crucial role in supporting businesses across the South East, by unlocking connectivity, trade, and investment.

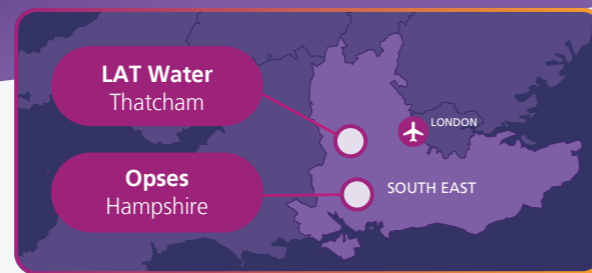
Heathrow connects businesses across the South East to more than 230 destinations in 85 countries. Regions and nations across the UK can access 92% of the global economy within a direct flight from Heathrow.

## HEATHROW AND THE SOUTH EAST (2024)

**224**  
Supply chain partners

**£232.6 m+**  
Supply chain spend in the South East of England

**80.4%**  
of supply chain are SMEs



## Case Study

### LAT Water

LAT Water is a Berkshire-based, British technology company at the forefront of developing new approaches to wastewater treatment and desalination. LAT Water operates across the UK and enjoys a global reach with supply chains and customers all over the world. Heathrow has been critical to LAT Water's success. With domestic partners as far north as Aberdeen and international partners as distant as China, the company needs fast, easy access to all its markets. Which is exactly what it gets through Heathrow.

“ Heathrow is really important as a transport hub for our business. We need the airport's international connectivity to deliver key components and support for our global projects.”

Mark Hardiman, Co-founder and CEO



## World of Opportunity 2024

### Opes

In 2024, Heathrow re-launched the World of Opportunity grant programme designed to support the UK's SMEs to boost their export potential through trade missions, research and training opportunities.

Based in Hampshire, Opes is one of 12 winners around the UK. Opes specialises in integrating third-party systems – blue lights, sirens, ANPR, radios, and CCTV - directly into emergency service vehicles, removing the need for extra hardware and helps reduce driver distraction, allowing teams to stay focused when every second counts. Their flagship products are now used in over 1,200 vehicles across UK police forces, ambulance services, and security organisations.



### Bridewell

Bridewell is one of the UK's leading cyber security providers for critical national infrastructure organisations and has worked with Heathrow for over 7 years. With a global team of over 300 cyber specialists across the UK and US, they help ensure that Heathrow's critical systems remain safe and secure as a vital piece of UK infrastructure. As with all things cyber security - sometimes the best tools you have to protect yourself are the people you work with.



Reading  
South East

HEATHROW'S  
IMPORTANCE  
TO THE UK



**60%**  
of our supply chain are SMEs



**83 m+**  
passengers in 2024



**72%**  
of all UK air cargo by value comes via Heathrow\*

June 2025

Heathrow

MAKES  
The Manufacturers' Organisation

\* source: HMRC UK Trade Info – 2024 full year data

As the UK's only hub airport, Heathrow plays a crucial role in supporting businesses across the South West, by unlocking connectivity, trade, and investment.

Heathrow connects businesses across the South West to to 230 destinations in 85 countries. Regions and nations across the UK can access 92% of the global economy within a direct flight from Heathrow.

HEATHROW AND THE SOUTH WEST (2024)

**46** Supply chain partners

**85%** of supply chain are SMEs

**39** SME partners

**£5.6m+** Supply chain spend in the South West



World of Opportunity 2024

The Natural Fibre Company

In 2024, Heathrow re-launched the World of Opportunity grant programme designed to support the UK's SMEs to boost their export potential through trade missions, research and training opportunities.

Based in Cornwall, The Natural Fibre Company is one of 12 winners from around the UK. A British wool spinning mill with expertise in British-breed fibre processing, they work with a range of sustainable fibres including wool, alpaca and mohair. Their work includes research fibre trials and new product development activity. In addition to making yarns for their trade customers, they design and produce their own yarn under the brand name, Blacker Yarns, which is sold worldwide in Europe, Canada and America, with 45% of the products they make exported to international markets.



Case Study Tregothnan Tea

Tregothnan Tea planted the UK's first tea garden, yielding the country's first home-grown tea in 2005. Fifteen years later, it has become Europe's largest tea garden, with over 20,000 tea bushes planted each year. Tregothnan exports its produce to over 50 countries, and more than 100 countries have at some time bought Tregothnan tea. The business relies on Heathrow for its global reach and connections with the rest of the world – and its supply chains also look overseas for mechanical support and expertise.



“ Heathrow is a vital link to any small or medium-size business in the UK. We use them heavily for bringing customers, but also exporting tea or high-value products alongside passengers. Heathrow has fulfilled a big part of us becoming the largest tea garden in Europe, exporting fine English tea to the world and hosting tea connoisseurs in Cornwall from all over the world. The connection from Heathrow to Cornwall allows us to make the UK tea centre truly international.”

Jonathon Jones OBE, Managing Director of Trading



Ascent AI

As Heathrow looks to harness AI, it is partnering with leading digital services firms like Bristol-based Ascent to extract better strategic value from data and capitalise on artificial intelligence. Though Heathrow is a key client, the aviation-themed meeting room is a happy coincidence. Ascent's data scientists have developed a bespoke tool in collaboration with Heathrow that optimises forecasting, enabling the team to make adjustments to and decisions on flight movements in seconds rather than hours, reconfiguring schedules at the click of a button. Trained on Heathrow's own data, the tool has improved resource efficiency and freed up the team to focus on strategic planning.



\* source: HMRC UK Trade Info – 2024 full year data

As the UK's only hub airport, Heathrow plays a crucial role in supporting businesses across the West Midlands, by unlocking connectivity, trade, and investment.

Heathrow connects businesses across the West Midlands to more than 230 destinations in 85 countries. Regions and nations across the UK can access 92% of the global economy within a direct flight from Heathrow.

## HEATHROW AND THE WEST MIDLANDS (2024)

**44**  
supply chain partners

**£58.8 m+**  
Supply chain spend in the West Midlands

**29**  
SME suppliers

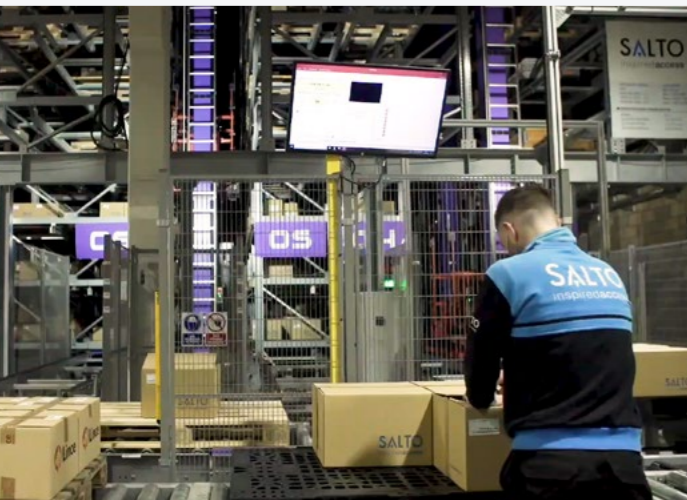
### Case Study

## SALTO Systems

Based in Warwickshire, SALTO Systems develops and manufactures advanced and reliable wireless locking and access-control solutions. Heathrow has helped the company, which is widely recognised as a global market leader, expand its operations throughout the UK and in 90 other countries. As well as supplying Heathrow, SALTO has used the airport's cargo capabilities to support global expansion, which now extends to 40,000 projects around the world.

“As a result of our work at Heathrow, we have now expanded into other airports in the UK, Europe and the US.”

Ramesh Gurdev, Managing Director



### World of Opportunity 2024

## IBiotech Ltd

In 2024, Heathrow re-launched the World of Opportunity grant programme designed to support the UK's SMEs to boost their export potential through trade missions, research and training opportunities.

Based in Wolverhampton, IBiotech Ltd is one of 12 winners from around the UK. They are focused on sustainable biomaterial development for a range of applications and have successfully completed two projects with Innovate-UK, and nearing the end of their patent development for a luxury bio-based leather produced from brewing by-products.



## Zaun Limited

Zaun Fencing based in Wolverhampton are the UK's only in-house manufacturer of mesh fencing systems, and has supplied Heathrow with British-made security fencing since 2017 and supported the airport's perimeter protection and 2030 decarbonisation goals. The partnership led to Zaun Fencing developing a new patented security system, showcasing British innovation and manufacturing on a global stage.



**As the UK's only hub airport, Heathrow plays a crucial role in supporting businesses across Wales, by unlocking connectivity, trade, and investment.**

Heathrow connects businesses across Wales to more than 230 destinations in 85 countries. Regions and nations across the UK can access 92% of the global economy within a direct flight from Heathrow.

**HEATHROW AND WALES (2024)**

**SME 87.5%**  
of supply chain partners are SMEs

**£130,701**  
Supply chain spend in Wales



**Case Study**

**Radnor Preserves**

Award-winning Radnor Preserves of Newtown is one of the world's best artisan marmalade makers. The business uses high-quality ingredients to produce handmade marmalades, preserves and chutneys. Radnor's international reputation (it won the Double Gold Prize at the World Marmalade Awards in 2015) has enabled it to export fine Welsh produce via Heathrow to a global customer base. Using Heathrow's air-freight capabilities, Radnor can fly samples and orders to international buyers at short notice. The company serves East Asian markets such as Japan and Macau, and had its produce featured at Tokyo's 2022 British Fair. Radnor Preserves are also available in Heathrow's own terminals.

“ Heathrow has the best international connections, so if we need to get samples to people quickly we are able to do that. During COVID, exporting played an essential role in our business growth, and we look forward to continuing to expand our exports with Heathrow's help.”

Joanna Morgan, Director



**World of Opportunity 2024**

**Adventure Tours UK**

In 2024, Heathrow re-launched the World of Opportunity grant programme designed to support the UK's SMEs to boost their export potential through trade missions, research and training opportunities.

Based in Wales, Adventure Tours UK is one of 12 winners from around the UK. They craft active and sustainable holidays across Wales, Scotland and England for curious travellers. As a certified B Corp and the first UK inbound tour operator to carbon label tours, Adventure Tours UK is committed to responsible travel. Guests travel from all around the world to discover what the UK has to offer as a travel destination. Efficient, affordable international connections are vital to their business.



**7 Steel**

Formerly Celsa Steel UK, 7 Steel is a Cardiff-based leader in low-carbon, circular steel production. It has long supported Heathrow developments, supplying over 150,000 tonnes of UK-made steel for projects including Terminal 5, 2B, Kilotaxiway and the Sofitel Hotel, with all rebar fabricated through its downstream business. Heathrow's commitment to the UK Steel Charter reflects its support for a thriving domestic supply chain. Heathrow is proud to work with companies like 7 Steel who prioritise quality, safety and investment across the UK.



\* source: HMRC UK Trade Info - 2024 full year data

As the UK's only hub airport, Heathrow plays a crucial role in supporting businesses across Yorkshire and the Humber, by unlocking connectivity, trade, and investment.

Heathrow connects businesses across Yorkshire and the Humber to 230 destinations in 85 countries. Regions and nations across the UK can access 92% of the global economy within a direct flight from Heathrow.

HEATHROW AND YORKSHIRE AND THE HUMBER (2024)



38

Supply chain partners



84%

of supply chain are SMEs



32

SME partners



£75.6m+

Supply chain spend in Yorkshire and the Humber



Case Study

## Angloco

Angloco has been designing and building special-purpose firefighting and rescue vehicles for over 50 years. The company exports to over 70 countries and provides customer support through a fast-moving team of global service engineers. Angloco dispatches its team of engineers via Heathrow to wherever they're needed, no matter how far. A well-connected and direct transport link to its customers is vital for the business and for serving the communities and livelihoods that its emergency equipment protects.



“ From a practical point of view, Heathrow airport continues to offer us a gateway for our time critical spare parts and for our sales, service and training teams to visit customers across the globe. One of our latest deliveries was to Grantley Adams International Airport in Barbados, but we certainly haven't turned our back on the home market. Angloco is passionate about the need to improve the UK's export success, and looks forward to continuing its efforts alongside Heathrow, government and industry to do so.”  
**Alistair Brown**, Managing Director



## Byworth Boilers

Based in Keighley, West Yorkshire, Byworth Boilers are now one of the town's foremost employers with over 100 employees from the local area. Boilers are designed, manufactured, and finished in their factory site, with a brand-new centre in town opening soon to support their growing trade. They've supplied Heathrow for over two years with ongoing comprehensive training and equipment, with over 30 staff members trained to date based on a shared commitment to safety, sustainability, and continuous improvement.





Scan the QR code  
for our latest news:

